

Instruction Manual

Filter System Compact

Standard H

Jumbo



Introduction

Thank you for choosing a JUWEL Aquarium product.

Our products represent over 30 years experience in the manufacturing of aquariums and their accessories applying most modern production techniques bringing together the JUWEL Aquarium system, which is both easy to use and simple to maintain.

Always unplug all immersed electrical equipment from mains before placing your hands into the water.

The JUWEL Filter System

The JUWEL Filter System is a highly effective two-stage biological filtration system, using components specifically designed to perform together perfectly.

As this Filter System is positioned inside the aquarium, no hoses are required, meaning no leaking connections, since the water remains inside the aquarium.

The output from the powerhead also remains at full strength since there is no need to pass the water through hoses, connections etc. This means that it remains at full capacity ensuring an even and smooth stream of water through the filtration media.

The large filtration volume of the sponges ensures a highly effective biological cleansing of the water.



Filter Wool (white pad)

The white filter wool acts as a mechanical pre-filter, removing large particles of dirt and excess food which in turn ensures that the other sponges do not get clogged.

Active Carbon Sponge (black)

The black activated carbon sponge sits on top of the blue coarse filter sponges, and removes chemical impurities from the water which cannot be removed biologically.

Nitrate Removal Sponge (green)

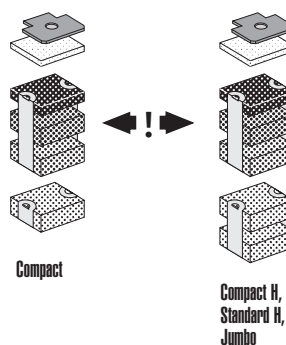
The Sponge contains micro-organisms, which will, once developed, reside inside the sponges and in the water. These micro-organisms feed of nitrates and will reduce them significantly. The JUWEL Filtration system provides the optimum housing for these micro-organisms.

Filter Sponge Coarse (blue)

The coarse blue filter sponges allow bacteria cultures to develop quickly, cleaning the water which is now free from chemical impurities.

Filter Sponge Fine (blue)

The fine blue sponges and the bacteria cultures living in them, clean the water of even the smallest impurities.



Installation of the JUWEL Filter System in your Aquarium

The JUWEL Filter has been designed for installation in the right hand corner of the aquarium.

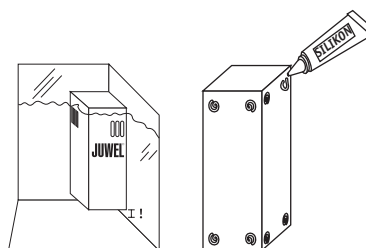
First of all, please remove all internal components of the Filter System leaving you with the empty filter housing.

In order to ensure that the Filter System is securely fastened to the glass panels, we have included a tube of special JUWEL Aquarium silicon. Apply the silicone onto the housing as shown in the picture, on both the side and the rear walls.

Your Aquarium should be empty or as near as empty, allowing you to wipe the glass dry.

Position the filter housing in the aquarium in such a way that the top of the filter housing rises 1 cm above the maximum water level of your aquarium.

Press the housing onto the glass panels firmly, and hold it for a few minutes. Allow the silicone to dry out for at least 24 hours.



Set-Up of the JUWEL Filter System

We recommend that you prepare the filter system ready for use before you fill the aquarium with sand/gravel, plants and water.

Please observe the following instructions carefully to ensure that the filter system works at its optimum.

The JUWEL Filter System consists of:

- 1 x heater (only incl. in complete aquariums)
- 1 x top heater holder (pic. 1)
- 1 x power head
- 1 x power head adapter
- 2 x outlet nozzles
- 3 pieces white pre-filter wool wrapped in plastic for protection (3 weeks supply)
- 1 active carbon sponge wrapped in plastic for protection
- 2 filter baskets
- 1 green nitrate removal sponge wrapped in plastic
- 1 blue coarse filter sponge
- 1 blue fine filter sponge (in Compact Filter System, i.e. Rekord range) or
- 2 blue fine filter sponges (in Filter System Compact H, Standard H and Jumbo)

1. In order to set up the filter system, you may elect to leave the heater in position.

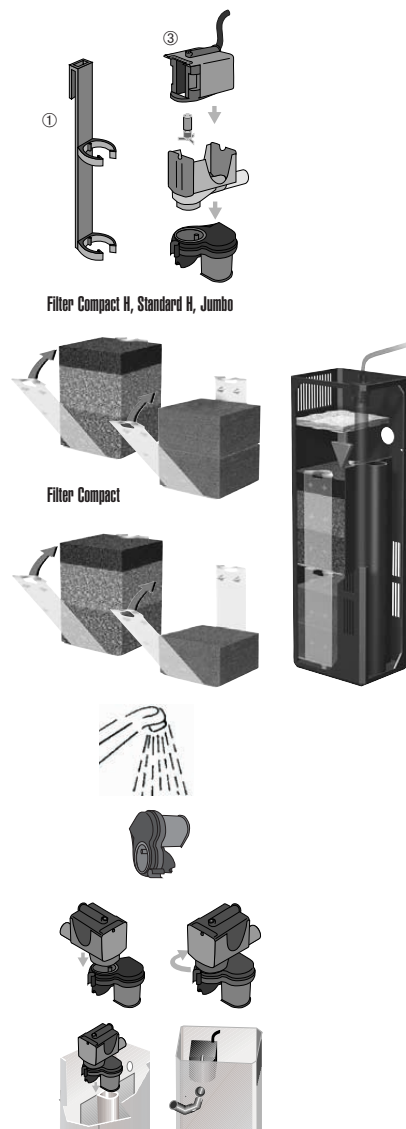
2. Unpack the power head and check that it has been correctly assembled. It consists of the motor unit (pic. 3), the impeller and the pump housing. Make sure that the housing is securely fastened to the motor unit and that the wire is fastened properly to the housing.

3. Remove the white pre-filter wool and remove the two filter baskets containing the rest of the filter media. Remove the protective cover from the white pre-filter wool, black carbon sponge and green nitrate removal sponge and rinse the blue sponges under warm water.

4. Put the fine blue filter sponges into one of the baskets and lower it into the filter housing. In the second basket, place the coarse blue filter sponge, the nitrate removal sponge and the black carbon sponge (without the protective cover) and lower it into the filter housing. Put one piece of the white pre-filter wool on top of the black sponge.

5. Position the power head onto the adapter and turn it clockwise until it is securely fastened. Position the adapter on the separation wall and press it down firmly. The water outlet nozzle from the pump should now be exactly opposite the hole in the filter housing. Attach the two water outlet nozzles from outside of the filter housing through this hole and onto the water outlet nozzle of the power head. Using the water outlet nozzles you can adjust the waterflow to the position you prefer.

6. The JUWEL Filter System is now ready for use.



The JUWEL Aquarium Filter System is a biological filter system. For it to work effectively, bacteria cultures will need to grow inside the blue sponges. This process can take up 6-8 weeks for the filter to fully mature. Consequently we recommend to decorate and plant the aquarium and add just a few (3-5) hardy fish in order to help the maturation process. Please test the water on a weekly basis to monitor the water conditions and once the water is safe you can begin to add more fish.

Recommendation

JUWEL Air Diffuser

The special JUWEL Aquarium Air Diffuser provides additional oxygen to the aquarium if desired. This can be ordered from your JUWEL Aquarium retailer (Part No. 85145).



Care and maintenance of the JUWEL Filter System

Maintenance of the Filter System

The JUWEL Filter System requires very little maintenance if you follow the following instructions.

- Replace the white filter wool pad once a week. If you have large fish, then this may require changing slightly more frequently. This will ensure that the filter sponges will not be clogged by larger dirt particles.
- Replace the black activated carbon sponge every 4-6 weeks. Again, if you have large fish then this may be to be more frequent. This ensures that any chemical impurities from the water will be removed. Please note that the chemicals which are absorbed by the activated carbon contained in the sponge, will be released to the water again if the change intervals are too long.
- If the filter wool and the activated carbon sponge are replaced as suggested, then it is sufficient to carefully clean or replace the coarse blue sponges at 6-12 weeks and the fine blue sponges at 3-6 months only.

Important - Cleaning or replacing the blue filter sponges will affect the bacteria cultures. We recommend therefore, that only one of the sponges at a time is cleaned or replaced, never at the same time.

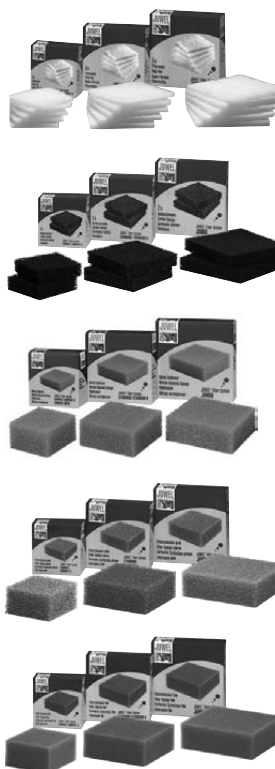
You do not need to worry about the liquid dirt accumulating at the bottom of the filter housing. Normally, this dirt contains important biological substances which enhance the water quality.

Please do not worry if some dirt gets into the water during the cleaning process causing cloudiness. After the filter system is back in operation, the water will soon clear again.

- In order to allow a proper level of micro-organisms in the filtration system it is recommended to exchange the sponge every 6 weeks. The nitrate removal sponge contains bacteria, which will after a while reduce the nitrate level in the aquarium significantly.

Important:

Always use original JUWEL Aquarium filter media to ensure the optimum performance of your system.



Care and Maintenance

The JUWEL Aquarium Power head requires very little maintenance but we recommend that you check it regularly to ensure optimum performance.

In order to maintain the power head, please follow the following steps:

1. Disconnect the heater and the power head from the power supply and allow the heater to cool for approx. 30 minutes.
2. Remove the heater and place it on a non-flammable, safe surface.
3. Remove the nozzles from the power head.
4. Remove power head and adapter from the filter system.
5. Turn the adapter to the right to free it from the power head. Check that the rubber seals do not show any sign of wear and tear. In case of doubt we recommend to replace the adapter to ensure continuing optimum performance.
6. Remove the power head adapter from the motor and remove the impeller.
7. Clean and check all parts, in particular the impeller for wear and tear especially the magnet.

Thereafter please reassemble the power head and reposition it back into the filter.

Recommendation:

With exchange of the impellers 400, 600 and 1000 the flow rate can be varied.

In order to ensure that the power head operates at its optimum and maintains its low noise level, we recommend to check and potentially replace the parts subject to wear and tear, such as the impeller and the adapter.

All spare parts are available from your local JUWEL Aquarium retailer.

Safety instructions:

Never operate the power head out of water.

Always unplug the power head from the power supply before removing it from the filter.

The power head is intended for indoor use and for use in fluids up to 35°C.

Never repair the electrical cord or plug. In case of damage replace the complete power head.





Proper disposal (electrical waste)

The labelling on the product or on the accompanying literature declares that it must not be disposed of, at the end of its service life, with the ordinary household rubbish. Please dispose of this equipment separately from other waste, to protect the environment or public health from damage by unregulated waste disposal. Recycle the equipment and support the sustained recycling of material resources.

Private users should contact the dealer who sold them the product or the responsible authorities, for a demonstration on how to recycle the equipment in an environmentally friendly way.

Guarantee

We guarantee the performance of the JUWEL-Aquarium product or its accessories to the purchaser for a period of 24 months from the date of purchase according to the following conditions:

§ 1 Extent of the guarantee

(1) This guarantee extends to the JUWEL-Aquarium product and its components excluding items subject to wear and tear such as light tubes and filter media. It is limited to the product as such and does not cover damage to other property and/or individuals. In addition, the provisions of the product liability law apply. These provisions are not limited by the aforementioned arrangement.

(2) It is the prerogative of JUWEL-Aquarium to decide whether the guarantee is performed by means of repair or replacement. If neither repair nor replacement can ensure the performance of the JUWEL-Aquarium product the purchaser is entitled to demand a reduction in price or to return the product against repayment of the purchase price.

§ 2 Guarantee period and settlement procedure

(1) The guarantee period begins on the day of the purchase of the product from the retailer. Claims under this guarantee will not be honoured, if

- (a) the damage is caused as a result of improper use or maintenance or non-observance of the instructions given in this manual
- (b) the product or its components have been maintained by persons or companies not authorised by the manufacturer to do so
- (c) the product or its components have been damaged by mechanical means of whatsoever kind, in particular broken glass

(2) All claims under this guarantee have to be notified to the retailer, from whom the aquarium has been purchased without delay, however, not longer than 2 weeks from the day of first occurrence of defects. Rights under the consumer protection laws will remain unaffected.

(3) Guarantee claims will only be accepted if the validity of the claim is supported by evidence of purchase of the JUWEL-Aquarium product.

This declaration of guarantee is a translation only. In case of doubts the original German language version prevails.

We reserve the right to make technical alterations.

© JUWEL AQUARIUM

© JUWEL, Trigon, Vision, Rekord, Rio, Lido, Monolux, Duolux, Multilux, High-Lite