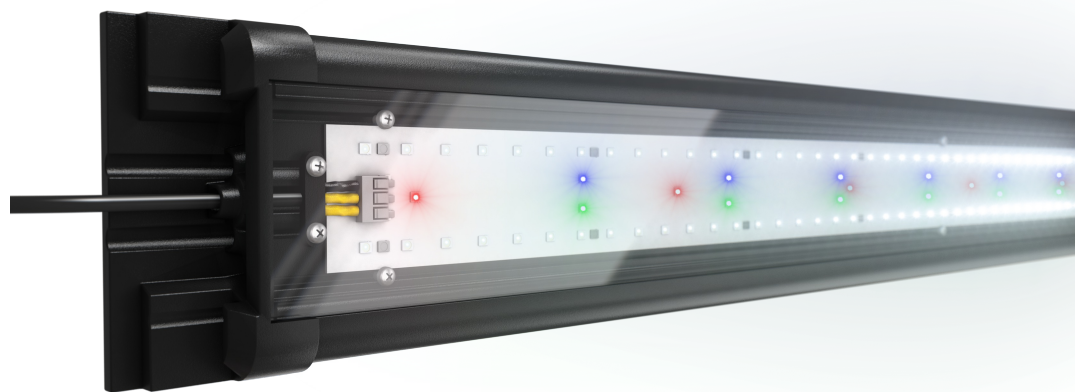


JUWEL®

Instruction Manual HeliaLux LED / Spectrum



www.juwel-aquarium.com

Introduction

Thank you for choosing a JUWEL Aquarium product.

Our products represent over 50 years experience in the manufacturing of aquariums and their accessories applying most modern production techniques bringing together the JUWEL Aquarium system, which is both easy to use and simple to maintain.

Please read this instruction manual carefully and completely to make sure you have received all components before setting up the aquarium. Please observe the safety instructions and maintenance guidelines given in this manual.

This instruction manual has been carefully prepared to provide you with accurate and complete information. All efforts have been made to ensure that the information given is correct. However, we cannot accept responsibility for printing or other errors. Technical details are always approximate and are not warranted characteristics and may be subject to change without notice.



Safety notices

- Pull the power plug for each light replacement.
- The electrical devices may only be operated in rooms.
- Pull the power plug of all devices operated in water before coming into contact with the water.
- Never repair the connection line of the light. Always replace the entire device in case of damage.
- Never open the light in case of damage or malfunction. Replace the complete light.
- Do not operate the light under water.
- This appliance can be used by children aged from 8 years and above and persons with reduced physical, sensory or mental capabilities or lack of experience and knowledge if they have been given supervision or instruction concerning use of the appliance in a safe way and understand the hazards involved. Children shall not play with the appliance. Cleaning and user maintenance shall not be made by children without supervision.
- Only operate with the ground fault circuit interrupter, max. 30 mA.
- The power plugs of the electrical devices must not become wet.
- Connect the power plug to the power supply at a height so that a loop is created in the connection line, on which water could drip off.
- For safety reasons, it is only permitted to operate the HeliaLux LED light with an original JUWEL charger.
- Only use original JUWEL spare parts for replacement.
- The charger must not be attached to or on the aquarium frame.

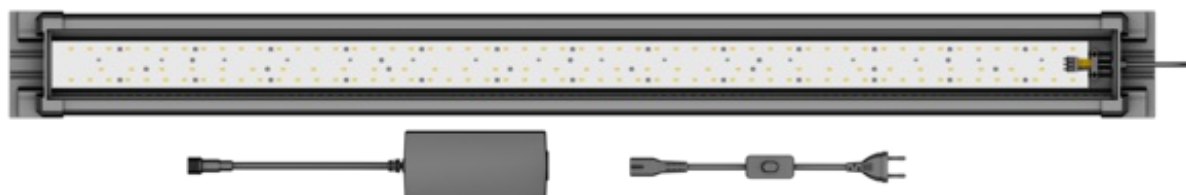
This product fulfils the guidelines issued by the European Union (EU) and is therefore entitled to carry the CE mark.
www.juwel-aquarium.de/en/declaration-of-conformity/

HeliaLux LED / Spectrum

The HeliaLux LED / Spectrum is a state-of-the-art high-performance light unit for your JUWEL aquarium. The SMD-LEDs guarantee maximum light power for optimal plant growth whilst offering up to a 50% energy saving compared to the same size T5 unit.

The HeliaLux LED / Spectrum is comprised of:

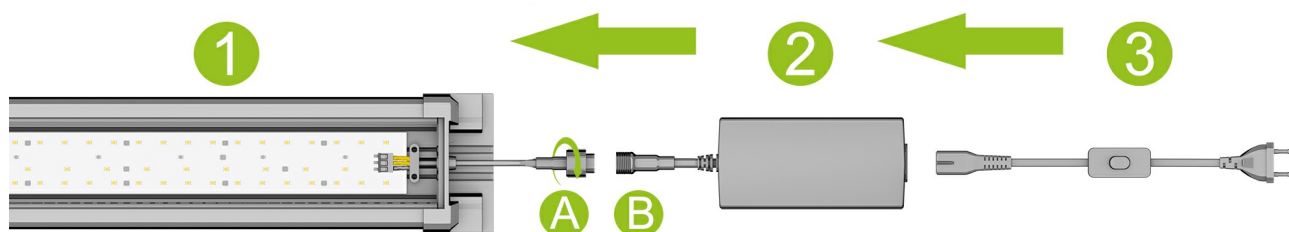
- HeliaLux LED / Spectrum light unit (1)
- Charger (2)
- Power cable (3)



Start-up of the HeliaLux LED / Spectrum

Connect the plug (A) of the HeliaLux LED / Spectrum light unit with that of the charger (B) in accordance with the illustration and screw the locking ring completely onto the screw connector. Also plug the power cable into the charger.

The HeliaLux LED / Spectrum can now be placed onto the top frame and can be connected to the power supply. Having done this please fit the flaps to close the aquarium completely.



Care and maintenance

During care and maintenance activities, always disconnect the HeliaLux LED / Spectrum from the power supply. If necessary, we recommend cleaning with a soft cloth and mild detergent.

optional

The HeliaLux SmartControl can be used to control the HeliaLux Spectrum light unit. It is also possible to control the HeliaLux LED light unit with the optionally available splitter. The optionally available splitter allows up to two HeliaLux lamps to be used with one SmartControl.

The HeliaLux SmartControl has four operating modes:

Version A: HeliaLux Control + 1x HeliaLux Spectrum (4 colours)

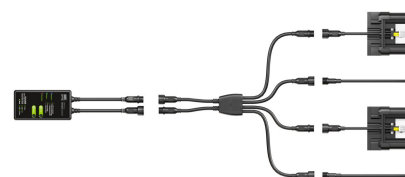
Version B: HeliaLux SmartControl + HeliaLux Spectrum Splitter + 2x HeliaLux Spectrum (4 colours)

Version C: HeliaLux SmartControl + HeliaLux LED Splitter + 1x HeliaLux LED (2 colours)

Version D: HeliaLux SmartControl + HeliaLux LED Splitter + 2x HeliaLux LED (2 colours)

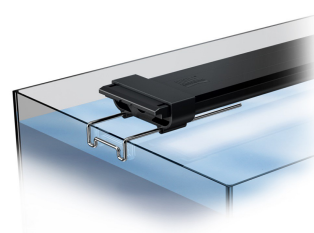
The HeliaLux SmartControl & Splitter is available as an original JUWEL Aquarium accessory (Article Number SmartControl 48996, HeliaLux LED Splitter 48997, HeliaLux Spectrum Splitter 48998).

Further information will be available from your retailer or on our website "<http://www.juwel-aquarium.com>"



HeliaLux LED / Spectrum Universal Fit

To use the HeliaLux LED / Spectrum light unit for aquariums of other manufacturers, the mount of the HeliaLux LED / Spectrum Universal Fit is available from specialist retailers as an original JUWEL aquarium accessory (article number 48995). You can find further information on our website "<http://www.juwel-aquarium.com>"





Please recycle as required!

Please do not hesitate to contact our competent administration if you have any questions.



Proper disposal (electrical waste)

The labelling on the product or on the accompanying literature declares that it must not be disposed of, at the end of its service life, together with household rubbish. Please dispose of this equipment separately from other waste, to protect the environment or public health from damage by unregulated waste disposal.

Recycle the equipment and support the sustained recycling of material resources.

Private users should contact the dealer who sold them the product or the responsible authorities, for a demonstration on how to recycle the equipment in an environmentally friendly way.

Guarantee

We guarantee the performance of the JUWEL-Aquarium product or its accessories to the purchaser for a period of 24 months from the date of purchase according to the following conditions:

§ 1 Extent of the guarantee

(1) This guarantee extends to the JUWEL-Aquarium product and its components excluding items subject to wear and tear such as T5 and T8 light tubes and filter media. It is limited to the product as such and does not cover damage to other property and/or individuals. In addition, the provisions of the product liability law apply. These provisions are not limited by the aforementioned arrangement.

(2) It is the prerogative of JUWEL-Aquarium to decide whether the guarantee is performed by means of repair or replacement. If neither repair nor replacement can ensure the performance of the JUWEL-Aquarium product the purchaser is entitled to demand a reduction in price or to return the product against repayment of the purchase price.

§ 2 Guarantee period and settlement procedure

(1) The guarantee period begins on the day of the purchase of the JUWEL Aquarium product from the retailer. Claims under this guarantee will not be honoured, if

- (a) the damage is caused as a result of improper use or maintenance or nonobservance of the instructions given in this manual
- (b) the product or its components have been maintained by persons or companies not authorised by the manufacturer to do so
- (c) the product or its components have been damaged by mechanical means of whatsoever kind, in particular broken glass

(2) All claims under this guarantee have to be notified to the retailer, from whom the aquarium has been purchased without delay, however, not longer than 2 weeks from the day of first occurrence of defects. Rights under the consumer protection laws will remain unaffected.

(3) Guarantee claims will only be accepted if the validity of the claim is supported by evidence of purchase of the JUWEL-Aquarium product. This declaration of guarantee is a translation only. In case of doubts the original German language version prevails.

We reserve the right to make technical alterations.

© JUWEL AQUARIUM

® JUWEL, Trigon, Vision, Rekord, Rio, Lido, Vio, Primo, Korall, MonoLux, DuoLux, MultiLux, KorallLux, Violux, NovoLux, PrimoLux, SeaSkim, EccoSkim AquaHeat, EasyFeed, SmartFeed, High-Lite, Warm-Lite, Colour-Lite, Day-Lite, Juwel Twin-Lite, HiFlex, SmartControl, Juwel Ecoflow, Bioflow, Cirax, Nitrax, Phorax, Carbox, BioPad, BioCarb, BioPlus, bioBoost, OxyPlus, Silexo, Conexo.

JUWEL AQUARIUM AG & CO. KG

Karl-Göx-Straße 1 27356 Rotenburg/Wümme . GERMANY

Telefon +49(0)42 61/93 79-32

Telefax +49(0)42 61/93 79-856

Service-Mail service@juwel-aquarium.de

JUWEL AQUARIUM UK Branch

Gateway 11 Business Park

Penfold Drive, Wymondham Norfolk NR18 0WZ

Tel.: 01953 606 363 Fax: 01953 603 839

E-Mail: info@juwel-aquarium.co.uk

Service-Mail: info@juwel-aquarium.co.uk