

JUWEL®

Instruction Manual EccoSkim



www.juwel-aquarium.com



Safety notices

- This appliance can be used by children aged from 8 years and above and persons with reduced physical, sensory or mental capabilities or lack of experience and knowledge, if they have been given supervision or instruction concerning use of the appliance in a safe way and understand the hazards involved. Children should not play with the appliance. Cleaning and user maintenance should not be made by children without supervision.
- The power plug of the electrical devices must not become wet. Connect the power plug to the power supply at such a height where a loop is created in the power cable from which water could drip off.
- At all times, only operate the electrical devices for your aquarium (lighting, heater, pump etc.) using an earth leakage circuit breaker (EL circuit breaker) with a maximum tripping current of 30 mA. If the socket that you are using in your home installation is not safeguarded with such a circuit breaker, please use a commercially available power strip with an integrated earth leakage circuit breaker.
- Disconnect the power plug of all devices operated in water before they come into contact with the water.
- The electrical devices may only be operated in rooms.
- Please note that the pump can only be operated in water. Prior to removing the pump from the housing, disconnect all power plugs. The pump can only be operated in rooms and with a water temperature of up to 35 degrees Celsius. The connection line may not be repaired. Always replace the entire pump in case of damage.

This product fulfils the guidelines issued by the European Union (EU) and is therefore entitled to carry the CE mark.
www.juwel-aquarium.de/en/declaration-of-conformity/

EccoSkim components

1. Floating unit
2. Regulating tube for current
3. EccoSkim housing
4. Eccoflow 300 Pump
5. EccoSkim filter mount
6. Cover for filter mount
7. Suction mount



JUWEL EccoSkim

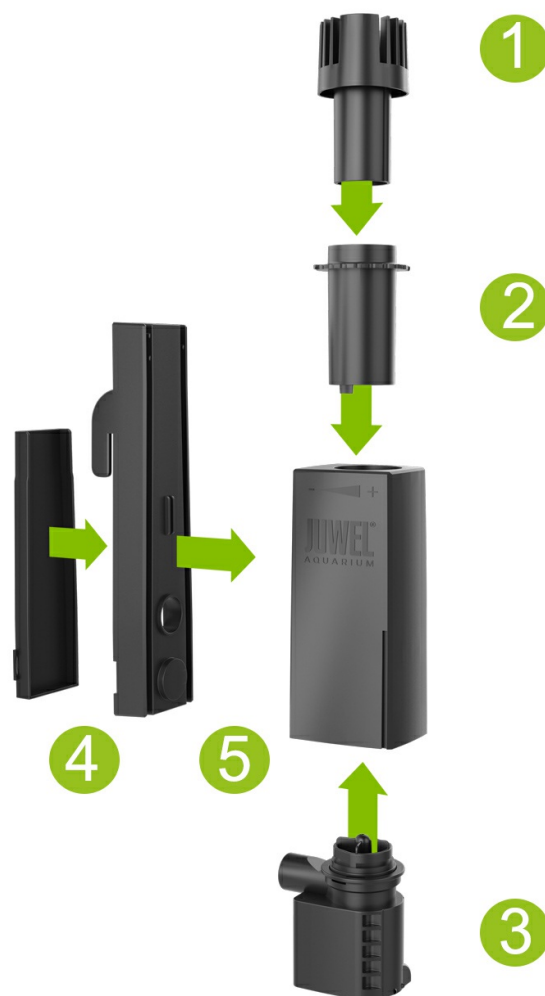
JUWEL EccoSkim combines the benefits of a surface skimmer with a compact design and great adjustable surface-skimming capacities.

With a performance of 300 l/h at a consumption of only 4.4 W, the JUWEL EccoSkim guarantees effective surface skimming for sweet-water and salt-water aquariums.

Surface-active substances are effectively removed and conveyed to the JUWEL filter system and stored there.

Taking the JUWEL EccoSkim into operation

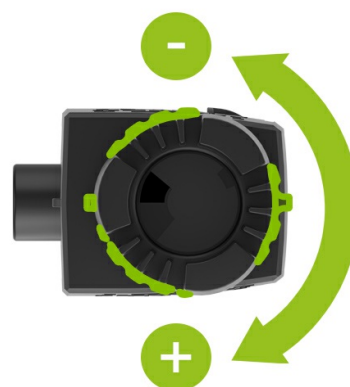
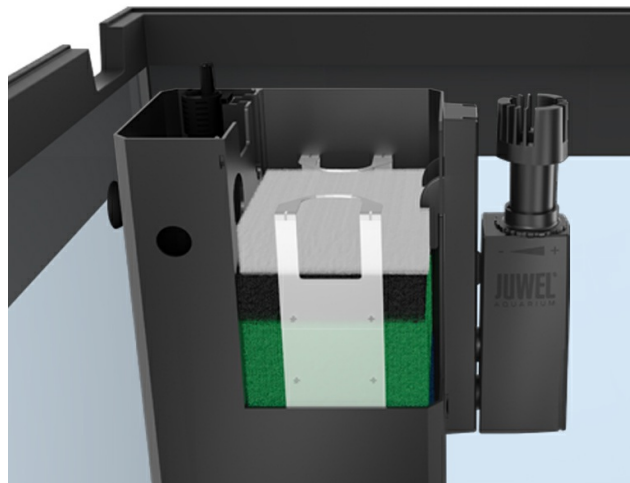
Assemble all the JUWEL EccoSkim components as shown below.



Installation in JUWEL aquariums

The JUWEL EccoSkim can be fitted into all JUWEL Rio, Lido, Vision, Trigon and Primo 110 aquariums.

1. Assemble the JUWEL EccoSkim in accordance with the instructions.
2. Hang the JUWEL EccoSkim into the JUWEL filter system's slits.
3. Open the water current regulating tube completely.
4. Connect the pump to the electricity mains.

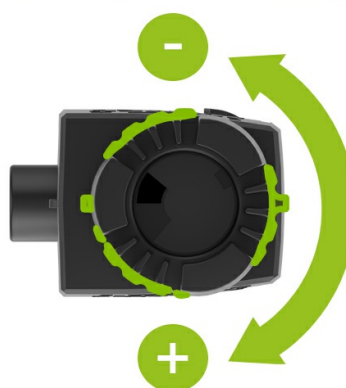


Fitting in all other aquariums

The JUWEL EccoSkim may also be used in all other common types of glass aquarium. To do so, use the supplied suction mount to attach the JUWEL EccoSkim to the glass pane.

1. Assemble the JUWEL EccoSkim in accordance with the instructions.
2. Attach the suction mount using the slits provided on the JUWEL EccoSkim housing.
3. Secure the JUWEL EccoSkim to the glass. Make sure that half of the top section of the float protrudes from the water.
4. Open the water current regulating tube completely.
5. Connect the pump to the electricity mains.





Regulating the suction performance

1. Assemble the JUWEL EccoSkim as described in 'Taking the JUWEL EccoSkim into operation' and take the unit into operation.
2. Turn the regulating tube for the water current as shown in the picture to adapt the suction performance to your requirements.



JUWEL EccoSkim maintenance

1. Disconnect the power plug of the Eccoflow pump.
2. Remove the JUWEL EccoSkim with the filter mount from the aquarium.
3. Dismantle the JUWEL EccoSkim in the following order:
 1. Hold on to the EccoSkim housing while pushing the filter mount downwards.
 2. Remove the EccoSkim housing.
 3. Remove the pump from the filter mount by carefully pulling and twisting the pump housing.

CAUTION!

Do not pull the pump cable!

This can lead to damage such as cable breakage!

4. Regularly remove deposits from the JUWEL EccoSkim with warm water to keep it working.
5. Reassemble the components in reverse order.
6. Now reconnect the pump to the power grid.

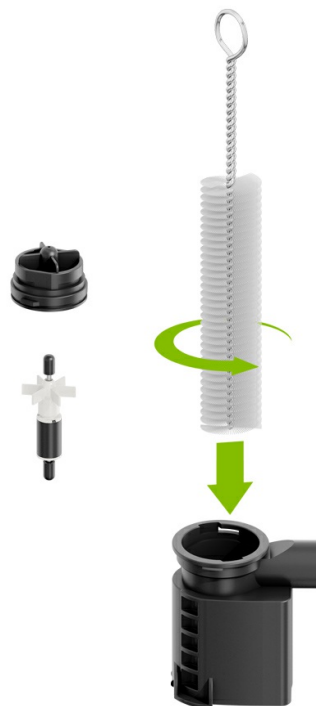


JUWEL pump maintenance Eccoflow

The JUWEL Eccoflow 300 pump should be checked with regard to functionality and cleaned at regular intervals (at least once a month).

Please proceed as follows to that end:

1. Disconnect all electrical devices that are operated in the water from the power grid.
2. Remove the pump from the JUWEL EccoSkim housing as outlined under "JUWEL EccoSkim maintenance" and from the filter mount.
3. Thoroughly clean all components. Please use the pliers provided to open the pump. It is necessary to remove the impeller from the chamber and remove deposits and dirt from the chamber itself as well as the impeller. Please use the cleaning brush provided with the JUWEL EccoSkim to this end. Otherwise the functionality of the pump will be impaired. Also check the impeller for damage and possible signs of wear of the magnet.
4. Please reassemble the Eccoflow pump in reverse order. Please take particular care with the rubber bearings at both ends of the axle.
5. Reconnect the devices that are operated in the water to the power grid.



Notice

We recommend that wearing parts, e.g. the impeller and axle along with the rubber bearings, be replaced at intervals of approximately 12 months in order to ensure that the pump runs smoothly and to the best of its capacities. (Art. No.: Impeller Eccoflow 300: 85092)
Inquire at your specialist retailer to that end.



Please recycle as required!

Please do not hesitate to contact our competent administration if you have any questions.



Proper disposal (electrical waste)

The labelling on the product or on the accompanying literature declares that it must not be disposed of, at the end of its service life, together with household rubbish. Please dispose of this equipment separately from other waste, to protect the environment or public health from damage by unregulated waste disposal.

Recycle the equipment and support the sustained recycling of material resources.

Private users should contact the dealer who sold them the product or the responsible authorities, for a demonstration on how to recycle the equipment in an environmentally friendly way.

Guarantee

We guarantee the performance of the JUWEL-Aquarium product or its accessories to the purchaser for a period of 24 months from the date of purchase according to the following conditions:

§ 1 Extent of the guarantee

(1) This guarantee extends to the JUWEL-Aquarium product and its components excluding items subject to wear and tear such as T5 and T8 light tubes and filter media. It is limited to the product as such and does not cover damage to other property and/or individuals. In addition, the provisions of the product liability law apply. These provisions are not limited by the aforementioned arrangement.

(2) It is the prerogative of JUWEL-Aquarium to decide whether the guarantee is performed by means of repair or replacement. If neither repair nor replacement can ensure the performance of the JUWEL-Aquarium product the purchaser is entitled to demand a reduction in price or to return the product against repayment of the purchase price.

§ 2 Guarantee period and settlement procedure

(1) The guarantee period begins on the day of the purchase of the JUWEL Aquarium product from the retailer. Claims under this guarantee will not be honoured, if

(a) the damage is caused as a result of improper use or maintenance or nonobservance of the instructions given in this manual

(b) the product or its components have been maintained by persons or companies not authorised by the manufacturer to do so

(c) the product or its components have been damaged by mechanical means of whatsoever kind, in particular broken glass

(2) All claims under this guarantee have to be notified to the retailer, from whom the aquarium has been purchased without delay, however, not longer than 2 weeks from the day of first occurrence of defects. Rights under the consumer protection laws will remain unaffected.

(3) Guarantee claims will only be accepted if the validity of the claim is supported by evidence of purchase of the JUWEL-Aquarium product. This declaration of guarantee is a translation only. In case of doubts the original German language version prevails.

We reserve the right to make technical alterations.

© JUWEL AQUARIUM

® JUWEL, Trigon, Vision, Rekord, Rio, Lido, Vio, Primo, Korall, MonoLux, DuoLux, MultiLux, KorallLux, Violux, NovoLux, PrimoLux, SeaSkim, EccoSkim AquaHeat, EasyFeed, SmartFeed, High-Lite, Warm-Lite, Colour-Lite, Day-Lite, Juwel Twin-Lite, HiFlex, SmartControl, Juwel Ecoflow, Bioflow, Cirax, Nitrax, Phorax, Carbox, BioPad, BioCarb, BioPlus, bioBoost, OxyPlus, Silexo, Conexo.

JUWEL AQUARIUM AG & CO. KG

Karl-Göx-Straße 1 27356 Rotenburg/Wümme . GERMANY

Telefon +49(0)42 61/93 79-32

Telefax +49(0)42 61/93 79-856

Service-Mail service@juwel-aquarium.de

JUWEL AQUARIUM UK Branch

Gateway 11 Business Park

Penfold Drive, Wymondham Norfolk NR18 0WZ

Tel.: 01953 606 363 Fax: 01953 603 839

E-Mail: info@juwel-aquarium.co.uk

Service-Mail: info@juwel-aquarium.co.uk